

# CENTRAL CATALOG FOR EXPENDABLE PACKAGING

## BOGE RUBBER & PLASTICS

**VALID FOR: DAMME    SIMMERN    TRNAVA    FONTENAY**

### Transport containers and accessories

Expendable packaging	Expendable packaging	Expendable packaging
SOLO CARDBOARD BOXES	CARDBOARD BOXES FIXED ON WOODEN PALLETS	WOODEN BOXES / WOODEN PALLETS

#### SMALL CARDBOARD BOXES

- 1S** - 280 x 240 x 240 mm
- 2S** - 298 x 196 x 171 mm
- 3S** - 300 x 200 x 90 mm
- 4S** - 300 x 200 x 200 mm
- 5S** - 300 x 200 x 200 mm
- 6S** - 300 x 200 x 200 mm
- 7S** - 360 x 277 x 160 mm
- 8S** - 380 x 280 x 280 mm
- 9S** - 400 x 300 x 200 mm
- 10S** - 400 x 300 x 200 mm
- 11S** - 400 x 300 x 215 mm
- 12S** - 400 x 300 x 290 mm
- 13S** - 400 x 300 x 300 mm
- 14S** - 400 x 300 x 300 mm

#### MEDIUM CARDBOARD BOXES

- 1M** - 555 x 360 x 160 mm
- 2M** - 555 x 360 x 320 mm
- 3M** - 580 x 340 x 225 mm
- 4M** - 600 x 400 x 250 mm
- 5M** - 600 x 400 x 250 mm

#### CARDBOARD BOXES ON PALLETS

- 1C** - 970 x 760 x 550 mm
- 2C** - 1000 x 600 x 500 mm
- 3C** - 1070 x 600 x 430 mm
- 4C** - 1070 x 600 x 430 mm
- 5C** - 1070 x 600 x 460 mm
- 6C** - 1070 x 600 x 630 mm
- 7C** - 1070 x 600 x 630 mm
- 8C** - 1070 x 600 x 630 mm
- 9C** - 1160 x 770 x 1025mm
- 10C** - 1120 x 922 x 895 mm
- 11C** - 1143 x 803 x 681 mm
- 12C** - 1140 x 950 x 640 mm
- 13C** - 1140 x 475 x 600 mm
- 14C** - 1150 x 1000 x 725 mm
- 15C** - 1200 x 850 x 550 mm
- 16C** - 1200 x 1000 x 600 mm
- 17C** - 1200 x 1000 x 600 mm
- 18C** - 1200 x 1000 x 600 mm

#### WOODEN BOXES

- 1B** - 1100 x 790 x 660 mm
- 2B** - 1130 x 1130 x 750 mm
- 3B** - 1150 x 1000 x 725 mm
- 4B** - 1170 x 1140 x 610 mm
- 5B** - 1170 x 1140 x 610 mm
- 6B** - 1180 x 1130 x 620 mm

#### WOODEN PALLETS

- 1P** - 800 x 600 x 140 mm
- 2P** - 1000 x 800 x 150 mm
- 3P** - 1070 x 600 x 125 mm
- 4P** - 1070 x 600 x 145 mm
- 5P** - 1200 x 800 x 155 mm
- 6P** - 1200 x 1000 x 140 mm
- 7P** - 1200 x 1000 x 140 mm

## CATALOG FOR EXPENDABLE PACKAGING

BOGE Elastmetall GmbH  
Plant Damme 5306 / 5316

### Transport containers and accessories



#### LFT Karton C

SAP Nr. 91.000.542 Plant 5306 5316

OVERSEA

External dimensions L 298 x W 196 x H 171 mm  
Internal dimensions L 286 x W 186 x H 100 mm  
Tare weight 0,22 kg  
Max load: 15 kg manual handling / 30 kg automatic  
Stackability factor 1+3



#### China cardboard box small Beist HMI

SAP Nr. 91.204.064 Plant 5306 5316

OVERSEA

External dimensions L 360 x W 277 x H 160 mm  
Internal dimensions L 345 x W 262 x H 125 mm  
Tare weight 0,39 kg  
Max load: 15 kg  
Stackability factor 1+2



#### China cardboard box medium Beist HMI

SAP Nr. 91.179.759 / 91.204.065 Plant 5306 5316

OVERSEA

External dimensions L 555 x W 360 x H 160 mm  
Internal dimensions L 540 x W 345 x H 125 mm  
Tare weight 0,75 kg / Stackability factor 1+5  
Max load: 15 kg



### China cardboard box large Beist HMI

SAP Nr. 91.204.066 Plant 5306

**OVERSEA**

External dimensions L 555 x W 360 x H 320 mm  
Internal dimensions L 540 x W 345 x H 285 mm  
Tare weight 0,96 kg / Stackability factor 1+1  
Max load: 15 kg



### LFT Karton A printed

SAP Nr. 91.000.544 Plant 5306 5316

**OVERSEA**

External dimensions L 580 x W 340 x H 225 mm  
Internal dimensions L 570 x W 330 x H 210 mm  
Tare weight 0,74 kg  
Max load: 15 kg manual handling / 50 kg automatic  
Stackability factor 1+4



### LFT EW small box with pallet

SAP Nr. 91.000.655 Plant 5306 5316

External dimensions L 1070 x W 600 x H 430 mm  
Internal dimensions L 1050 x W 585 x H 257 mm  
Tare weight 12 kg  
Max load: 300 kg  
Stackability factor 1+2



### LFT EW small box with pallet

SAP Nr. 91.116.629 Plant 5306 5316

**OVERSEAS**

External dimensions L 1070 x W 600 x H 430 mm  
Internal dimensions L 1050 x W 585 x H 257 mm  
Tare weight 10 kg  
Max load: 300 kg  
Stackability factor 1+2



### EW big box with pallet

**OVERSEAS**

**SAP Nr. 91.000.656 Plant 5306 5316**

External dimensions L 1070 x W 600 x H 630 mm  
Internal dimensions L 1050 x W 580 x H 465 mm  
Tare weight 14,20 kg  
Max load: 400 kg  
Stackability factor 1+1



### EW big box with pallet

**OVERSEAS**

**SAP Nr. 91.116.706 Plant 5306 5316**

External dimensions L 1070 x W 600 x H 630 mm  
Internal dimensions L 1050 x W 585 x H 465 mm  
Tare weight 13 kg  
Max load: 400 kg  
Stackability factor 1+1



### China cardboard big Beist HMI with wooden pallet

**OVERSEA**

**SAP Nr. 91.204.067 Plant 5306 5316**

External dimensions L 1160 x W 770 x H 1025 mm  
Internal dimensions L 1130 x W 740 x H 965 mm  
Tare weight 12,53 kg / Stackability factor 1+2  
Max load: 400 kg



### EWP cardboard box fixed on wooden pallet

**SAP Nr. 91.143.356 Plant 5306**

External dimensions L 1120 x W 922 x H 895 mm  
Internal dimensions L 1105 x W 905 x H 750 mm  
Tare weight 16 kg  
Max load: 300 kg



### EW-Box IPPC

SAP Nr. 91.204.437 Plant 5306

External dimensions L 1143 x W 803 x H 681 mm  
Internal dimensions L 1115 x W 775 x H 500 mm  
Tare weight 18,50 kg  
Max load: 500 kg



### OSB wooden box

SAP Nr. 91.056.332 Plant 5306 5316

**OVERSEA**

External dimensions L 1100 x W 790 x H 660 mm  
Internal dimensions L 1000 x W 700 x H 500 mm  
Tare weight 48 kg / Stackability factor 1+2  
Max load: 800 kg



### DONGA box

SAP Nr. 91.000.211 Plant 5306 5316

External dimensions L 1130 x W 1130 x H 767 mm  
Internal dimensions L 1070 x W 1070 x H 625 mm  
Tare weight 58 kg / Stackability factor 1+1  
Max load: 500 kg



### EW- Small wooden pallet

SAP Nr. 91.000.556 Plant 5306 5316

**OVERSEA**

External dimensions L 1070 x W 600 x H 125 mm  
Tare weight 12,4 kg / Stackability factor 1+2  
Max load: 500 kg



## CATALOG FOR EXPENDABLE PACKAGING

BOGE Elastmetall GmbH / Plant Simmern 5602

### Transport boxes and accessories



#### One-way small cardboard box

SAP Nr. 91.124.644 Plant 5602

External dimensions L 300 x W 200 x H 200 mm  
Internal dimensions L 290 x W 190 x H 184 mm  
Tare weight 0,50 kg  
Max load: 20 kg (manual handling 15 kg)  
Stackability factor 1+2



#### One-way small cardboard box

SAP Nr. 91.124.645 Plant 5602

External dimensions L 380 x W 280 x H 280 mm  
Internal dimensions L 375 x W 275 x H 270 mm  
Tare weight 0,5 kg  
Max load: 20 kg (manual handling 15 kg)  
Stackability factor 1+2



#### Chinabox one-way cardboard box

SAP Nr. 91.125.882 Plant 5602

**OVERSEAS**

Ext. Dim. with pallet L 970 x W 760 x H 550 mm  
External dimensions L 970 x W 760 x H 400 mm  
Internal dimensions L 950 x W 740 x H 380 mm  
Tare weight 13,4 kg / Stackability factor 1+2  
Max load: 600 kg



### Small one-way pallet + carton

SAP Nr. 91.124.662 Plant 5602

**OVERSEAS**

Ext. Dim. with pallet L 1000 x W 600 x H 500 mm  
 External dimensions L 1000 x W 600 x H 350 mm  
 Internal dimensions L 980 x W 580 x H 330 mm  
 Tare weight 15 kg  
 Max load: 300 kg  
 Stackability factor 1+2



### Raufoss one-way pallet + carton

SAP Nr. 91.124.663 Plant 5602

Ext. Dim. with pallet L 1200 x W 850 x H 550 mm  
 External dimensions L 1200 x W 850 x H 400 mm  
 Internal dimensions L 1180 x W 780 x H 380 mm  
 Tare weight 20 kg  
 Max load: 650 kg  
 Stackability factor 1+2



### One-way EWP big pallet + carton

SAP Nr. 91.124.657 Plant 5602

Ext. Dim. with pallet L 1200 x W 1000 x H 600 mm  
 External dimensions L 1200 x W 1000 x H 450 mm  
 Internal dimensions L 1180 x W 980 x H 430 mm  
 Tare weight 28 kg  
 Max load: 650 kg  
 Stackability factor 1+2



### Wooden box

SAP Nr. 91.124.664 Plant 5602

**OVERSEAS**

External dimensions L 1170 x W 1140 x H 610 mm  
 Internal dimensions L 1100 x W 1030 x H 400 mm  
 Tare weight 56 kg / Max load: 910 kg  
 Stackability factor 1+1



## Wooden box with VCI plastic bag

SAP Nr. 91.124.671 Plant 5602

**OVERSEAS**

External dimensions L 1170 x W 1140 x H 610 mm

Internal dimensions L 1100 x W 1030 x H 400 mm

Tara weight 56,87 kg / Stackability factor 1+1

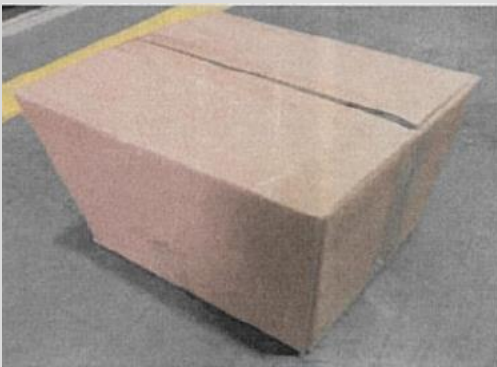
Max load: 910 kg



## CATALOG FOR EXPENDABLE PACKAGING

BOGE Elastmetall Slovakia a.s. / Plant Trnava 5304

### Transport boxes and accessories



#### Cardboard box FORD

SAP Nr. 91.190.196 Plant 5304

OVERSEAS

External dimensions L 280 x W 240 x H 240 mm  
Internal dimensions L 260 x W 220 x H 220 mm  
Tare weight 0,39 kg / Stackability factor 1+3  
Max load: 15 kg



#### Cardboard box small

SAP Nr. 91.130.155 Plant 5304

OVERSEAS

SPARE PACKAGING for KLT 4322 and 4325

External dimensions L 400 x W 300 x H 215 mm  
Internal dimensions L 380 x W 280 x H 200 mm  
Tare weight 0,39 kg / Stackability factor 1+2  
Max load: 15 kg



#### Cardboard box small

SAP Nr. 91.125.965 Plant 5304

External dimensions L 400 x W 300 x H 290 mm  
Internal dimensions L 380 x W 280 x H 270 mm  
Tare weight 0,43 kg / Stackability factor 1+2  
Max load: 15 kg



### Cardboard box small

**SAP Nr. 91.196.763 Plant 5304**

External dimensions L 600 x W 400 x H 250 mm  
 Internal dimensions L 590 x W 390 x H 230 mm  
 Tare weight 0,83 kg / Stackability factor 1+2  
 Max load: 15 kg



### Cartonbox medium with IPPC wooden pallet

**SAP Nr. 91.116.629 Plant 5304**

External dimensions L 1070 x W 600 x H 460 mm  
 Internal dimensions L 1050 x W 590 x H 270 mm  
 Tare weight 10 kg / Stackability factor 1+1  
 Max load: 400 kg



### Cartonbox medium with IPPC wooden pallet

**OVERSEAS**

**SAP Nr. 91.116.706 Plant 5304**

External dimensions L 1070 x W 600 x H 630 mm  
 Internal dimensions L 1050 x W 585 x H 465 mm  
 Tare weight 15 kg / Stackability factor 1+2  
 Max load: 400 kg



### Cardboard box with cover on a wooden pallet

**OVERSEAS**

**SAP Nr. 91.124.657**

External dimensions L 1200 x W 1000 x H 600 mm  
 Internal dimensions L 1170 x W 952 x H 400 mm  
 Tare weight 28 kg / Stackability factor 1+1  
 Max load: 400 kg



## Cardboard box with cover on a plastic pallet

**OVERSEAS**

**SAP Nr. 91.204.160**

External dimensions L 1200 x W 1000 x H 600 mm  
Internal dimensions L 1170 x W 952 x H 400 mm  
Tare weight 25 kg / Stackability factor 1+3  
Max load: 550 kg



## Cartonbox on a wooden pallet

**SAP Nr. 91.204.050 Plant 5304**

External dimensions L 1200 x W 1000 x H 600 mm  
Internal dimensions L 1170 x W 952 x H 400 mm  
Tare weight 28 kg / Stackability factor 1+3  
Max load: 550 kg



## Wooden box IPPC norm

**SAP Nr. 91.124.664 Plant 5304**

**OVERSEAS**

External dimensions L 1180 x W 1130 x H 620 mm  
Internal dimensions L 1080 x W 1040 x H 460 mm  
Tare weight 53kg / Stackability factor 1+1 (500+500kg)  
Max load: 1000 kg / Stackability factor 1+0



## Wooden box IPPC norm

**SAP Nr. 91.124.673 Plant 5304**

**OVERSEAS**

External dimensions L 1150 x W 1000 x H 725 mm  
Internal dimensions L 1070 x W 925 x H 600 mm  
Tare weight 56kg / Stackability factor 1+1 (500+500kg)  
Max load: 1000 kg / Stackability factor 1+0



## IPPC Pallet

SAP Nr. 91.000.XXX Plant 5304

**OVERSEAS**

External dimensions L 1070 x W 600 x H 145 mm

Tare weight 10 kg / Stackability factor 1+2

Max load: 800 kg



## EURO wooden pallet IPPC norm

SAP Nr. 91.000.015 Plant 5304

**OVERSEAS**

External dimensions L 1200 x W 800 x H 155 mm

Tare weight 22 kg / Stackability factor 1+2

Max load: 900 kg



## Industry pallet IPPC standard

SAP Nr. 91.131.380 Plant 5304

**OVERSEAS**

External dimensions L 1200 x W 1000 x H 140 mm

Tare weight 20 kg / Stackability factor 1+2

Max load: 800 kg

## CATALOG FOR EXPENDABLE PACKAGING

BOGE Elastmetall S.A.S. / Plant Fontenay 5336

### Transport boxes and accessories



#### Galia C40 one-way small carton

**SAP Nr. 91.142.191 Plant 5336**

External dimensions L 300 x W 200 x H 90 mm  
Internal dimensions L 270 x W 190 x H 82 mm  
Tare weight 0,19 kg  
Max load: 15 kg  
Stackability factor 1+2



#### Galia C15 one-way small carton

**SAP Nr. 91.118.063 Plant 5336**

External dimensions L 300 x W 200 x H 200 mm  
Internal dimensions L 262 x W 192 x H 195 mm  
Tare weight 0,15 kg  
Max load: 15 kg  
Stackability factor 1+2



#### Galia A15 one-way small carton

**SAP Nr. 91.118.056 Plant 5336**

External dimensions L 300 x W 200 x H 200 mm  
Internal dimensions L 291 x W 190 x H 190 mm  
Tare weight 0,15 kg  
Max load: 15 kg  
Stackability factor 1+2





### Galia C13 one-way small carton

SAP Nr. 91.052.207 Plant 5336

External dimensions L 400 x W 300 x H 200 mm  
 Internal dimensions L 390 x W 290 x H 184 mm  
 Tare weight 0,65 kg  
 Max load: 15 kg  
 Stackability factor 1+2



### Galia A13 one-way small carton

SAP Nr. 91.118.058 Plant 5336

**OVERSEAS**

External dimensions L 400 x W 300 x H 200 mm  
 Internal dimensions L 390 x W 285 x H 186 mm  
 Tare weight 0,55 kg  
 Max load: 15 kg  
 Stackability factor 1+2



### Galia C12 one-way medium carton

SAP Nr. 91.156.183 Plant 5336

External dimensions L 400 x W 300 x H 300 mm  
 Internal dimensions L 380 x W 291 x H 287 mm  
 Tare weight 0,42 kg  
 Max load: 15 kg  
 Stackability factor 1+2



### Galia A12 one-way medium carton

SAP Nr. 91.156.182 Plant 5336

**OVERSEAS**

External dimensions L 400 x W 300 x H 300 mm  
 Internal dimensions L 392 x W 290 x H 285 mm  
 Tare weight 0,66 kg  
 Max load: 15 kg  
 Stackability factor 1+2



### Galia A10 one-way small carton

SAP Nr. 91.156.181 Plant 5336

External dimensions L 600 x W 400 x H 250 mm  
Internal dimensions L 594 x W 395 x H 236 mm  
Tare weight 1,012 kg  
Max load: 15 kg  
Stackability factor 1+2



### 3P Cardboard box with IPPC wooden pallet

OVERSEAS

SAP Nr. 91.204.407 Plant 5336

External dimensions L 1140 x W 475 x H 600 mm  
Internal dimensions L 1096 x W 435 x H 550 mm  
Tare weight: 12 kg  
Max load: kg  
Stackability factor 1+2



### 4H Cardboard box with IPPC wooden pallet

OVERSEAS

SAP Nr. 91.184.079 Plant 5336

External dimensions L 1140 x W 950 x H 640 mm  
Internal dimensions L 1082 x W 919 x H 505 mm  
Tare weight: 20 kg  
Max load: kg  
Stackability factor 1+3



### Wooden pallet

SAP Nr. 91.058.768 Plant 5336

External dimensions L 800 x W 600 x H 140 mm  
Tare weight : 10 kg  
Max load: kg



### Industry pallet IPPC standard

**SAP Nr. 91.153.824 Plant 5336**

External dimensions L 1000 x W 800 x H 150 mm

Tare weight 16 kg

Max load: kg



### Industry pallet IPPC standard

**SAP Nr. 91.131.380 Plant 5336**

External dimensions L 1200 x W 1000 x H 140 mm

Tare weight 20 kg

Max load: kg