

# CENTRAL CATALOG FOR RETURNABLE PACKAGING

## BOGE RUBBER & PLASTICS

**VALID FOR: DAMME    SIMMERN    BONN    TRNAVA    FONTENAY**

### Transport containers and accessories

Returnable packaging	Returnable packaging	Returnable packaging
VDA SMALL CARGO CONTAINERS	COVERS / CONTAINERS	WOODEN AND PLASTIC PALLETS

**VDA C – KLT**

- 4314.....[position C1 page 02](#)
- 4328.....[position C2 page 02](#)
- 6414.....[position C3 page 02](#)
- 6428.....[position C4 page 02](#)

**VDA R – KLT**

- 3215.....[position R1 page 02](#)
- 3215.....[position R2 page 03](#)
- 4315.....[position R3 page 03](#)
- 4329.....[position R4 page 02](#)
- 6429.....[position R5 page 02](#)
- 6429.....[position R6 page 03](#)
- 6415.....[position R7 page 04](#)

**VDA RL – KLT**

- 4147.....[position RL1 page 04](#)
- 4280.....[position RL2 page 04](#)
- 6147.....[position RL3 page 04](#)
- 6147.....[position RL4 page 04](#)
- 6280.....[position RL5 page 05](#)
- 6280.....[position RL6 page 05](#)
- 6280.....[position RL7 page 05](#)

**RAKO**

- 3-02.....[position RA1 page 05](#)

**FOLDING BOXES**

- 4325.....[position FB1F page 01](#)
- 6423.....[position FB2F page 01](#)

**PALLET COVERS**

- 1208.....[position PC1 page 07](#)
- 1208.....[position PC2 page 07](#)
- KLAPA.....[position PC3 page 07](#)
- 1210.....[position PC4 page 08](#)
- 9801.....[position PC5 page 08](#)
- 8161.....[position PC6 page 08](#)

**VDA KLT LIDS**

- KLT D32.....[position KL1 page 08](#)
- KLT D39.....[position KL 2 page 08](#)
- KLT D43.....[position KL 3 page 09](#)
- KLT D64.....[position KL 4 page 09](#)
- KLT D65.....[position KL 5 page 09](#)

**SKELETON BOXES**

- KLAPA.BOX.....[position SB 1 page 05](#)
- ½ GITTERBOX..[position SB2 page 06](#)
- GITTERBOX.....[position SB3 page 06](#)
- STEEL BOX.....[position SB4 page 06](#)
- MQB BOX..... [position SB5 page 06](#)

**VDA PLASTIC PALLETS**

- PLASTIC.....[position PP1 page 09](#)
- UPAL -S.....[position PP2 page 09](#)
- UPAL-H.....[position PP3 page 09](#)
- SLI 2112.....[position PP4 page 10](#)
- HALF.....[position PP5 page 10](#)

**WOODEN PALLETS**

- EUROPALLET....[position WP1 page 10](#)
- HALF PALLET....[position WP2 page 10](#)

**TRAYS**

- EPP TRAY.....[position PT1 page 06](#)

[For more KLT details click here](#)



### VDA C-KLT 4314

External dimensions L 400 x W 300 x H 147 mm  
 Internal dimensions L 334 x W 247 x H 103 mm  
 Tara weight 1,6 kg  
 Max load: 15 kg  
 Stackability factor 1+4

C1



### VDA C-KLT 4328

External dimensions L 400 x W 300 x H 280 mm  
 Internal dimensions L 334 x W 247 x H 236 mm  
 Tara weight 2,6 kg  
 Max load: 15 kg  
 Stackability factor 1+2

C2



### VDA C-KLT 6414

External dimensions L 600 x W 400 x H 147 mm  
 Internal dimensions L 532 x W 346 x H 98 mm  
 Tara weight 2,8 kg  
 Max load: 15 kg  
 Stackability factor 1+4

C3



### VDA C-KLT 6428

External dimensions L 600 x W 400 x H 280 mm  
 Internal dimensions L 532 x W 346 x H 231 mm  
 Tara weight 4,4 kg  
 Max load: 15 kg  
 Stackability factor 1+2

C4



### VDA R-KLT 3215

External dimensions L 300 x W 200 x H 147 mm  
 Internal dimensions L 243 x W 162 x H 129 mm  
 Tara weight 0,6 kg  
 Max load: 15 kg  
 Stackability factor 1+4

R1



**VDA R-KLT 3215 DARK BLUE**

External dimensions L 300 x W 200 x H 147 mm  
 Internal dimensions L 243 x W 162 x H 129 mm  
 Tara weight 0,6 kg  
 Max load: 15 kg  
 Stackability factor 1+4 R2



**VDA R-KLT 4315**

External dimensions L 400 x W 300 x H 147 mm  
 Internal dimensions L 346 x W 265 x H 109 mm  
 Tara weight 1,3 kg  
 Max load: 15 kg  
 Stackability factor 1+4 R3



**VDA R-KLT 4329**

External dimensions L 400 x W 300 x H 280 mm  
 Internal dimensions L 346 x W 265 x H 242 mm  
 Tara weight 1,9 kg  
 Max load: 15 kg  
 Stackability factor 1+2 R4



**VDA R-KLT 6429**

External dimensions L 600 x W 400 x H 280 mm  
 Internal dimensions L 544 x W 364 x H 242 mm  
 Tara weight 3 kg  
 Max load: 15 kg  
 Stackability factor 1+2 R5



**VDA R-KLT 6429 VIOLET**

External dimensions L 600 x W 400 x H 280 mm  
 Internal dimensions L 544 x W 364 x H 242 mm  
 Tara weight 3 kg  
 Max load: 15 kg  
 Stackability factor 1+2 R6



### VDA R-KLT 6415

External dimensions L 600 x W 400 x H 147 mm  
 Internal dimensions L 544 x W 364 x H 109 mm  
 Tara weight 2,2 kg  
 Max load: 15 kg  
 Stackability factor 1+4 RL7



### VDA RL-KLT 4147

External dimensions L 400 x W 300 x H 147 mm  
 Internal dimensions L 345 x W 260 x H 129 mm  
 Tara weight 1,1 kg  
 Max load: 15 kg  
 Stackability factor 1+4 RL1



### VDA RL-KLT 4280

External dimensions L 400 x W 300 x H 280 mm  
 Internal dimensions L 345 x W 260 x H 262 mm  
 Tara weight 1,7 kg  
 Max load: 15 kg  
 Stackability factor 1+2 RL2



### VDA RL-KLT 6147

External dimensions L 600 x W 400 x H 147 mm  
 Internal dimensions L 544 x W 359 x H 129 mm  
 Tara weight 1,8 kg  
 Max load: 15 kg  
 Stackability factor 1+4 RL3



### VDA RL-KLT 6147 **DARK BLUE**

External dimensions L 600 x W 400 x H 147 mm  
 Internal dimensions L 544 x W 359 x H 129 mm  
 Tara weight 1,8 kg  
 Max load: 15 kg  
 Stackability factor 1+4 RL4



### VDA RL-KLT 6280

External dimensions L 600 x W 400 x H 280 mm  
 Internal dimensions L 544 x W 359 x H 262 mm  
 Tara weight 2,7 kg  
 Max load: 15 kg  
 Stackability factor 1+2

RL5



### VDA RL-KLT 6280 GREY

External dimensions L 600 x W 400 x H 280 mm  
 Internal dimensions L 544 x W 359 x H 262 mm  
 Tara weight 2,7 kg  
 Max load: 15 kg  
 Stackability factor 1+2

RL6



### VDA RL-KLT 6280 LIGHT GREEN

External dimensions L 600 x W 400 x H 280 mm  
 Internal dimensions L 544 x W 359 x H 262 mm  
 Tara weight 2,7 kg  
 Max load: 15 kg  
 Stackability factor 1+2

RL7



### RAKO 3-302

External dimensions L 600 x W 400 x H 325 mm  
 Internal dimensions L 558 x W 358 x H 320 mm  
 Tara weight 2,7 kg  
 Max load: 15 kg  
 Stackability factor for transport 1+2

RA1



### KLAPA 1200 x 800 x 950

External dimensions L 1200 x W 800 x H 950 mm  
 Internal dimensions L 1120 x W 720 x H 748 mm  
 Tara weight 45 kg  
 Max load: 500 kg

SB1



### ½ GITTERBOX 1240 x 810 x 570

External dimensions L 1200 x W 800 x H 570 mm  
 Internal dimensions L 1110 x W 705 x H 389 mm  
 Tara weight 60 kg  
 Max load: 500 kg SB2



### GITTERBOX 1240 x 835 x 970

External dimensions L 1240 x W 835 x H 970 mm  
 Internal dimensions L 1220 x W 805 x H 790 mm  
 Tara weight 85 kg  
 Max load: 1000 kg SB3



### STEEL BIN 800 x 600 x 600 MQB

External dimensions L 800 x W 600 x H 600 mm  
 Internal dimensions L 714 x W 540 x H 460 mm  
 Tara weight 46 kg  
 Max load 500 kg  
 Stackability factor 1+2 SB4



### LFT 500 L-Container

External dimensions L 1000 x W 840 x H 600 mm  
 Internal dimensions L 990 x W 830 x H 500 mm  
 Tara weight 70 kg  
 Max load 1000 kg  
 Stackability factor 1+5 SB5



### EPP-Tray Peda cap Automatic 36 pcs

External dimensions L 600 x W 800 x H 85 mm  
 Internal dimensions L 550 x W 750 x H 74 mm  
 Tara weight 0,78 kg  
 Stackability factor 1+9 PT1

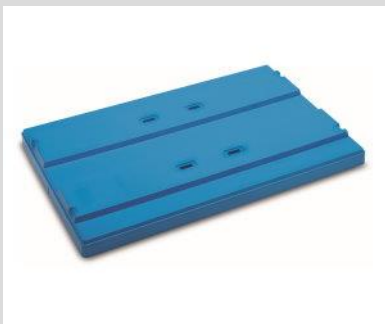


### VDA – COVER PLATE P 1208

External dimensions L 1204 x W 808 x 80 mm

Tara weight 6,10 kg

PC1



### VDA – COVER PLATE P 1208 **GREY**

External dimensions L 1204 x W 808 x 80 mm

Tara weight 6,10 kg

PC2



### VDA – KLAPA COVER **BLACK**

External dimensions L 1204 x W 807 x 80 mm

Tara weight 3 kg

PC3



### VDA – COVER PLATE LEP 1210

External dimensions L 1205 x W 1006 x 85 mm  
Tara weight 7 kg [PC4](#)



### PLASTIC COVERAGE 9801

External dimensions L 1204 x W 1006 x H 94 mm  
Tara weight 8,20 kg [PC5](#)



### VDA – COVER HALF PALLET 8161

External dimensions L 810 x W 610 x 75 mm  
Tara weight 2,0 kg [PC6](#)



### VDA – KLT Lid D32

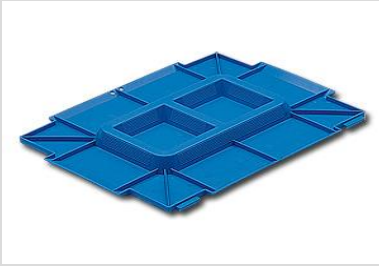
External dimensions L 300 x W 200 mm  
Tara weight 0,1 kg [KL1](#)



### VDA – KLT Lid D39

External dimensions L 300 x W 200 mm  
Tara weight 0,2 kg [KL2](#)





### VDA – KLT Lid D43

External dimensions L 400 x W 300 mm  
Tara weight 0,2 kg

KL3



### VDA – KLT Lid D64

External dimensions L 600 x W 400 mm  
Tara weight 0,6 kg

KL4



### VDA – KLT Lid D65 **LIGHT GREEN**

External dimensions L 600 x W 400 mm  
Tara weight 0,7 kg

KL5



### PLASTIC PALLET

External dimensions L 1200 x W 800 x H 160 mm  
Tara weight 14 kg  
Max load: 900 kg

PP1



### EUROPALLET UPAL-S

External dimensions L 1200 x W 800 x 160 mm  
Max.load static 6000 kg / dinamic 1500 kg  
Tara weight 16 kg

PP2



### EUROPALLET UPAL-H

External dimensions L 1200 x W 800 x 160 mm  
Max.load static 7500 kg / dinamic 1500 kg  
Tara weight 21 kg

PP3



## PLASTIC PALLET SLI 2112

External dimensions L 1206 x W 1010 x H 193 mm  
Max.load dinamic 1500 kg  
Tara weight 19,6 kg PP4



## PLASTIC PALLET HALF

External dimensions L 800 x W 600 x H 150 mm  
Tara weight 8,4 kg  
Max load: kg PP5



## WOODEN EUROPALLET

External dimensions L 1200 x W 800 x H 150 mm  
Max.load dinamic 1500 kg  
Tara weight 21 kg WP1



## WOODEN HALF EUROPALLET

External dimensions L 800 x W 600 x H 150 mm  
Max.load dinamic kg  
Tara weight 10 kg WP2

# CATALOG FOR RETURNABLE PACKAGING

BOGE Elastmetall Damme GmbH

Plant 5306 and 5316

## Transport containers and accessories

Returnable packaging	Returnable packaging	Returnable packaging
VDA SMALL CARGO CONTAINERS	COVERS / CONTAINERS	WOODEN AND PLASTIC PALLETS

**VDA C – KLT**

- 4328.....[position C1D page 12](#)
- 6428.....[position C2D page 12](#)

**VDA R – KLT**

- 3215.....[position R1D page 12](#)
- 3215.....[position R2D page 12](#)
- 4315.....[position R3D page 12](#)
- 4329.....[position R4D page 13](#)
- 6429.....[position R5D page 13](#)
- 6429.....[position R6D page 13](#)
- 6415.....[position R7D page 13](#)

**VDA RL – KLT**

- 4147.....[position RL1D page 13](#)
- 4280.....[position RL2D page 14](#)
- 6147.....[position RL3D page 14](#)
- 6147.....[position RL4D page 14](#)
- 6280.....[position RL5D page 14](#)
- 6280.....[position RL6D page 14](#)
- 6280.....[position RL7D page 15](#)
- 3148.....[position RL8D page 15](#)

**RAKO**

- 3-302.....[position RA1D page 15](#)

**PALLET COVERS**

- 1208.....[position PC1D page 15](#)
- 1208.....[position PC2D page 15](#)
- KLAPA.....[position PC3D page 16](#)
- 1210.....[position PC4D page 16](#)
- 8161.....[position PC5D page 16](#)

**VDA KLT LIDS**

- KLT D32.....[position KL1D page 16](#)
- KLT D39.....[position KL2D page 16](#)
- KLT D43.....[position KL3D page 16](#)
- KLT D64.....[position KL4D page 17](#)
- KLT D65.....[position KL5D page 17](#)

**SKELETON BOXES**

- KLAPA BOX...[position SB1D page 18](#)
- GITTERBOX...[position SB2D page 18](#)
- STEEL BOX....[position SB4D page 18](#)
- MQB BOX.....[position SB3D page 18](#)

**VDA PLASTIC PALLETS**

- UPAL –S.....[pos PP1D page 17](#)
- EUROPALLET.....[pos PP2D page 17](#)
- UPAL-H.....[pos PP3D page 17](#)

**WOODEN PALLETS**

- EUROPALLET.....[pos WP1D page 17](#)
- HALF PALLET.....[pos WP2D page 18](#)

**TRAYS**

- EPP TRAY.....[position PT1D page 19](#)



**VDA C-KLT 4328**

**SAP Nr. 91.000.483 Plant 5306 5316**

External dimensions L 400 x W 300 x H 280 mm  
 Internal dimensions L 334 x W 247 x H 236 mm  
 Tara weight 2,6 kg  
 Max load: 15 kg  
 Stackability factor 1+2 C1D



**VDA C-KLT 6428**

**SAP Nr. 91.000.009 Plant 5306 5316**

External dimensions L 600 x W 400 x H 280 mm  
 Internal dimensions L 532 x W 346 x H 231 mm  
 Tara weight 4,4 kg  
 Max load: 15 kg  
 Stackability factor 1+2 C2D



**VDA R-KLT 3215 DARK BLUE**

**SAP Nr. 91.186.635 Plant 5316**

External dimensions L 300 x W 200 x H 147 mm  
 Internal dimensions L 243 x W 162 x H 129 mm  
 Tara weight 0,6 kg  
 Max load: 15 kg  
 Stackability factor 1+4 R1D



**VDA R-KLT 3215**

**SAP Nr. 91.058.641 Plant 5316**

External dimensions L 300 x W 200 x H 147 mm  
 Internal dimensions L 243 x W 162 x H 129 mm  
 Tara weight 0,6 kg  
 Max load: 15 kg  
 Stackability factor 1+4 R2D



**VDA R-KLT 4315**

**SAP Nr. 91.000.018 Plant 5306**

**SAP Nr. 91.058.642 Plant 5316**

External dimensions L 400 x W 300 x H 147 mm  
 Internal dimensions L 346 x W 265 x H 109 mm  
 Tara weight 1,3 kg  
 Max load: 15 kg  
 Stackability factor 1+4 R3D



**VDA R-KLT 4329**

**SAP Nr. 91.058.643 Plant 5316**

External dimensions L 400 x W 300 x H 280 mm  
 Internal dimensions L 346 x W 265 x H 242 mm  
 Tara weight 1,9 kg  
 Max load: 15 kg  
 Stackability factor 1+2 R4D



**VDA R-KLT 6429**

**SAP Nr. 91.132.652 Plant 5316**

External dimensions L 600 x W 400 x H 280 mm  
 Internal dimensions L 544 x W 364 x H 242 mm  
 Tara weight 3 kg  
 Max load: 15 kg  
 Stackability factor 1+2 R5D



**VDA R-KLT 6429 VIOLET**

**SAP Nr. 91.054.359 Plant 5316**

External dimensions L 600 x W 400 x H 280 mm  
 Internal dimensions L 544 x W 364 x H 242 mm  
 Tara weight 3 kg  
 Max load: 15 kg  
 Stackability factor 1+2 R6D



**VDA R-KLT 6415**

**SAP Nr. 91.140.336 Plant 5316**

External dimensions L 600 x W 400 x H 147 mm  
 Internal dimensions L 544 x W 364 x H 109 mm  
 Tara weight 2,2 kg  
 Max load: 15 kg  
 Stackability factor 1+4 R7D



**VDA RL-KLT 4147 BLACK ESD**

**SAP Nr. 91.191.533 Plant 5306**

External dimensions L 400 x W 300 x H 147 mm  
 Internal dimensions L 345 x W 260 x H 129 mm  
 Tara weight 1,1 kg  
 Max load: 15 kg  
 Stackability factor 1+4 RL1D



**VDA RL-KLT 4280**

**SAP Nr. 91.056.063 Plant 5306**

External dimensions L 400 x W 300 x H 280 mm  
 Internal dimensions L 345 x W 260 x H 262 mm  
 Tara weight 1,7 kg  
 Max load: 15 kg  
 Stackability factor 1+2 RL2D



**VDA RL-KLT 6147 DARK BLUE**

**SAP Nr. 91.056.545 Plant 5306**

External dimensions L 600 x W 400 x H 147 mm  
 Internal dimensions L 544 x W 359 x H 129 mm  
 Tara weight 1,8 kg  
 Max load: 15 kg  
 Stackability factor 1+4 RL3D



**VDA RL-KLT 6147**

**SAP Nr. 91.058.006 Plant 5316**

External dimensions L 600 x W 400 x H 147 mm  
 Internal dimensions L 544 x W 359 x H 129 mm  
 Tara weight 1,8 kg  
 Max load: 15 kg  
 Stackability factor 1+4 RL4D



**VDA RL-KLT 6280 BLUE**

**SAP Nr. 91.058.009 Plant 5306 5316**

External dimensions L 600 x W 400 x H 280 mm  
 Internal dimensions L 544 x W 359 x H 262 mm  
 Tara weight 2,7 kg  
 Max load: 15 kg  
 Stackability factor 1+2 RL5D



**VDA RL-KLT 6280 GREY**

**SAP Nr. 91.052.300 Plant 5316**

External dimensions L 600 x W 400 x H 280 mm  
 Internal dimensions L 544 x W 359 x H 262 mm  
 Tara weight 2,7 kg  
 Max load: 15 kg  
 Stackability factor 1+2 RL6D



**VDA RL-KLT 6280 LIGHT GREEN**

SAP Nr. 91.132.265 Plant 5316

External dimensions L 600 x W 400 x H 280 mm  
 Internal dimensions L 544 x W 359 x H 262 mm  
 Tara weight 2,7 kg  
 Max load: 15 kg  
 Stackability factor 1+2 RL7D



**VDA RL-KLT 3148**

SAP Nr. 91.000.145 Plant 5316

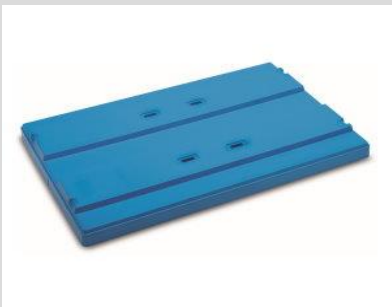
External dimensions L 300 x W 200 x H 147 mm  
 Internal dimensions L 243 x W 162 x H 129 mm  
 Tara weight 0,6 kg  
 Max load: 15 kg  
 Stackability factor 1+4 RL8D



**RAKO 3-302**

SAP Nr. 91.185.576 Plant 5306 5316

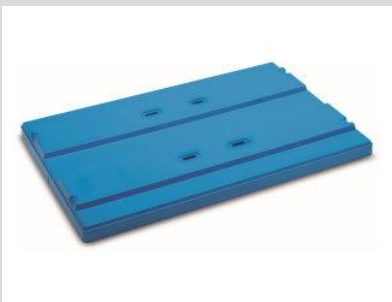
External dimensions L 600 x W 400 x H 325 mm  
 Internal dimensions L 558 x W 358 x H 320 mm  
 Tara weight 2,7 kg  
 Max load: 15 kg  
 Stackability factor 1+2 RA1D



**VDA – COVER PLATE P 1208**

SAP Nr. 91.000.005 Plant 5306 5316

External dimensions L 1204 x W 808 x 80 mm  
 Tara weight 6,10 kg PC1D



**VDA – COVER PLATE P 1208 GREY**

SAP Nr. 91.195.216 Plant 5316

External dimensions L 1204 x W 808 x 80 mm  
 Tara weight 6,10 kg PC2D



**VDA – KLAPA COVER BLACK**

**SAP Nr. 91.157.219 Plant 5316**

External dimensions L 1204 x W 807 x 80 mm

Tara weight 3 kg [PC3D](#)



**VDA – COVER PLATE LEP 1210**

**SAP Nr. 91.000.013 Plant 5316**

External dimensions L 1205 x W 1006 x H 85 mm

Tara weight 7 kg [PC4D](#)



**VDA – COVER HALF PALLET 8161**

**SAP Nr. 91.186.633 Plant 5316**

External dimensions L 810 x W 610x 75 mm

Tara weight 2,0 kg [PC5D](#)



**VDA – KLT Lid D32**

**SAP Nr. 91.058.443 Plant 5316**

External dimensions L 300 x W 200 mm

Tara weight 0,1 kg [KL1D](#)

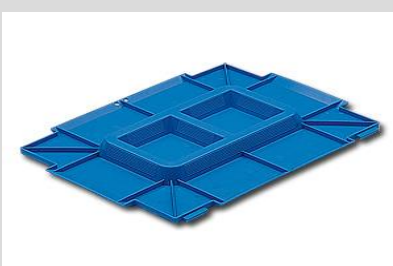


**VDA – KLT Lid D39**

**SAP Nr. 91.186.634 Plant 5316**

External dimensions L 300 x W 200 mm

Tara weight 0,2 kg [KL2D](#)



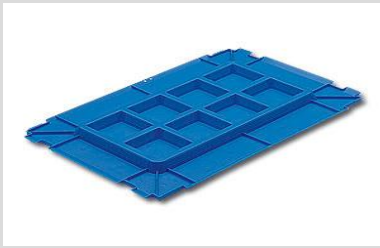
**VDA – KLT Lid D43**

**SAP Nr. 91.047.662 Plant 5306 5316**

External dimensions L 400 x W 300 mm

Tara weight 0,2 kg [KL3D](#)





### VDA – KLT Lid D64

SAP Nr. 91.047.661 Plant 5316

External dimensions L 600 x W 400 mm  
Tara weight 0,6 kg

KL4D



### VDA – KLT Lid D65 **LIGHT GREEN**

SAP Nr. 91.047.661 Plant 5316

External dimensions L 600 x W 400 mm  
Tara weight 0,7 kg

KL5D



### EUROPALLET UPAL-S

SAP Nr. 91.191.631 Plant 5306

External dimensions L 1200 x W 800 x 160 mm  
Max.load static 6000 kg / dinamic 1500 kg  
Tara weight 16 kg

PP1D



### EUROPALLET

SAP Nr. 91.192.122 Plant 5316

External dimensions L 1200 x W 800 x 160 mm  
Max.load static 6000 kg / dinamic 1500 kg  
Tara weight 13,7 kg

PP2D



### EUROPALLET UPAL-H

SAP Nr. 91.053.418 Plant 5306 5316

External dimensions L 1200 x W 800 x 160 mm  
Max.load static 7500 kg / dinamic 1500 kg  
Tara weight 21 kg

PP3D



### WOODEN EUROPALLET

SAP Nr. 91.000.015 Plant 5306 5316

External dimensions L 1200 x W 800 x 150 mm  
Max.load dinamic 1500 kg  
Tara weight 22 kg

WP1D



## WOODEN HALF EUROPALLET

**SAP Nr. 91.186.632 Plant 5316**

External dimensions L 800 x W 600 x H 150 mm

Max.load dynamic kg

Tara weight 10 kg

WP2D



## KLAPA 1200 x 800 x 950

**SAP Nr. 91.165.779 Plant 5316**

External dimensions L 1200 x W 800 x H 950 mm

Internal dimensions L 1120 x W 720 x H 748 mm

Tara weight 45 kg

Max load: 500 kg

SB1D



## GITTERBOX 1240 x 835 x 970

**SAP Nr. 91.000.007 Plant 5306 5316**

External dimensions L 1240 x W 835 x H 970 mm

Internal dimensions L 1220 x W 805 x H 790 mm

Tara weight 85 kg

Max load: 1000 kg

SB2D



## STEEL BIN 800 x 600 x 600 MQB

External dimensions L 800 x W 600 x H 600 mm

Internal dimensions L 714 x W 540 x H 460 mm

Tara weight 46 kg

Max load 500 kg

Stackability factor 1+2

SB3D



## LFT 500 L-Container

External dimensions L 1000 x W 840 x H 600 mm

Internal dimensions L 990 x W 830 x H 500 mm

Tara weight 70 kg

Max load 1000 kg

Stackability factor 1+5

SB4D

## EPP-Tray Pedal cap Automatic 36

External dimensions L 600 x W 800 x H 85 mm

Internal dimensions L 550 x W 750 x H 74 mm

Tara weight 0,78 kg

Stackability factor 1+9

PT1D



## CATALOG FOR RETURNABLE PACKAGING

BOGE Elastmetall Simmern / Bonn GmbH

Plant 5602 / 5605, 5606

### Transport containers and accessories

Returnable packaging	Returnable packaging	Returnable packaging
VDA SMALL CARGO CONTAINERS	COVERS / CONTAINERS	WOODEN AND PLASTIC PALLETS

**VDA C – KLT**

4328.....[position C1S page 21](#)  
 6428 .....[position C2S page 21](#)

**VDA R – KLT**

3215.....[position R1S page 21](#)  
 4315.....[position R2S page 21](#)  
 4329.....[position R3S page 21](#)  
 6415.....[position R4S page 21](#)

**VDA RL – KLT**

4147.....[position RL1S page 22](#)  
 4280.....[position RL2S page 22](#)  
 6147.....[position RL3S page 22](#)  
 6280.....[position RL4S page 22](#)

**VDA KLT COVERS**

D64.....[position KL1S page 23](#)

**PALLET COVERS**

1208.....[position PC1S page 23](#)

**SKELETON BOXES**

½ GIBO.....[position SB1S page 24](#)  
 GITTERBOX...[position SB2S page 24](#)

**VDA PLASTIC PALLETS**

UPAL-H.....[position PP1S page 23](#)  
 UPAL-H.....[position PP2S page 23](#)  
 SMALL.....[position PP3S page 23](#)

**WOODEN PALLETS**

- EUROPALLET.....[pos. WP1S page 23](#)



### VDA C-KLT 4328

SAP Nr. 91.000.483 Plant 5602

External dimensions L 400 x W 300 x H 280 mm  
 Internal dimensions L 334 x W 247 x H 236 mm  
 Tara weight 2,6 kg  
 Max load: 15 kg  
 Stackability factor 1+2

C1S



### VDA C-KLT 6428

SAP Nr. 91.000.009 Plant 5602

External dimensions L 600 x W 400 x H 280 mm  
 Internal dimensions L 532 x W 346 x H 231 mm  
 Tara weight 4,4 kg  
 Max load: 15 kg  
 Stackability factor 1+2

C2S



### VDA R-KLT 3215

SAP Nr. 91.140.468 Plant 5602

External dimensions L 300 x W 200 x H 147 mm  
 Internal dimensions L 243 x W 162 x H 129 mm  
 Tara weight 0,6 kg  
 Max load: 15 kg  
 Stackability factor 1+4

R1S



### VDA R-KLT 4315

SAP Nr. 91.000.018 Plant 5602

External dimensions L 400 x W 300 x H 147 mm  
 Internal dimensions L 346 x W 265 x H 109 mm  
 Tara weight 1,3 kg  
 Max load: 15 kg  
 Stackability factor 1+4

R2S



### VDA R-KLT 4329

SAP Nr. 91.141.994 Plant 5602

External dimensions L 400 x W 300 x H 280 mm  
 Internal dimensions L 346 x W 265 x H 242 mm  
 Tara weight 1,9 kg  
 Max load: 15 kg  
 Stackability factor 1+2

R3S



**VDA R-KLT 6415**

**SAP Nr. 91.140.336 Plant 5602**

External dimensions L 600 x W 400 x H 147 mm

Internal dimensions L 544 x W 364 x H 109 mm

Tara weight 2,2 kg

Max load: 15 kg

Stackability factor 1+4

R4S



**VDA RL-KLT 4147**

**SAP Nr. 91.056.034 Plant 5606**

External dimensions L 400 x W 300 x H 147 mm

Internal dimensions L 345 x W 260 x H 129 mm

Tara weight 1,1 kg

Max load: 15 kg

Stackability factor 1+4

RL1S



**VDA RL-KLT 4280**

**SAP Nr. 91.000.043 Plant 5602**

External dimensions L 400 x W 300 x H 280 mm

Internal dimensions L 345 x W 260 x H 262 mm

Tara weight 1,7 kg

Max load: 15 kg

Stackability factor 1+2

RL2S



**VDA RL-KLT 6147 DARK BLUE**

**SAP Nr. 91.056.545 Plant 5602**

External dimensions L 600 x W 400 x H 147 mm

Internal dimensions L 544 x W 359 x H 129 mm

Tara weight 1,8 kg

Max load: 15 kg

Stackability factor 1+4

RL3S



**VDA RL-KLT 6280 BLUE**

**SAP Nr. 91.058.009 Plant 5606**

External dimensions L 600 x W 400 x H 280 mm

Internal dimensions L 544 x W 359 x H 262 mm

Tara weight 2,7 kg

Max load: 15 kg

Stackability factor 1+2

RL4S

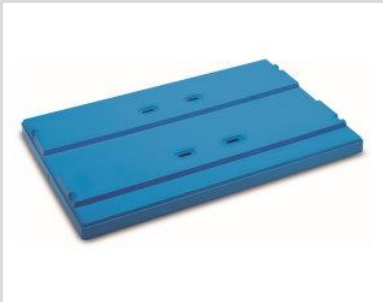


**VDA – KLT Lid D64**

**SAP Nr. 91.000.039 Plant 5602**

External dimensions L 600 x W 400 mm  
Tara weight 0,6 kg

KL1S



**VDA – COVER PLATE P 1208**

**SAP Nr. 91.000.005 Plant 5602**

External dimensions L 1204 x W 808 x 80 mm  
Tara weight 6,10 kg

PC1S



**EUROPALLET UPAL-H**

**SAP Nr. 91.192.556 Plant 5602**

External dimensions L 1200 x W 800 x 160 mm  
Max.load static 7500 kg / dinamic 1500 kg  
Tara weight 21 kg

PP1S



**EUROPALLET UPAL-H**

**SAP Nr. 91.053.418 Plant 5605**

External dimensions L 1200 x W 800 x 160 mm  
Max.load static 7500 kg / dinamic 1500 kg  
Tara weight 21 kg

PP2S



**SMALL PLASTIC PALLET**

**SAP Nr. 91.124.670 Plant 5606**

External dimensions L 800 x W 600 x 144 mm  
Max.load static 3000 kg / dinamic 750 kg  
Tara weight 15 kg

PP3S



**WOODEN EUROPALLET**

**SAP Nr. 91.000.015 Plant 5602 5605**

External dimensions L 1200 x W 800 x 150 mm  
Max.load dinamic 1500 kg  
Tara weight 21 kg

WP1S



### **½ GITTERBOX 1240 x 810 x 570**

**SAP Nr. 91.124.619 Plant 5605**

External dimensions L 1240 x W 810 x H 570 mm

Internal dimensions L 1225 x W 800 x H 395 mm

Tara weight 60 kg

Max load: 500 kg

SB1S



### **GITTERBOX 1240 x 835 x 970**

**SAP Nr. 91.000.007 Plant 5602 5605**

External dimensions L 1240 x W 835 x H 970 mm

Internal dimensions L 1220 x W 805 x H 790 mm

Tara weight 85 kg

Max load: 1000 kg

SB2S



# CATALOG FOR RETURNABLE PACKAGING

BOGE Elastmetall Slovakia a.s.

Plant Trnava 5304

## Transport containers and accessories

Returnable packaging	Returnable packaging	Returnable packaging
VDA SMALL CARGO CONTAINERS	COVERS / CONTAINERS	WOODEN AND PLASTIC PALLETS

### VDA C – KLT

- 4314.....[position C1T page 26](#)
- 4328.....[position C2T page 26](#)
- 6414.....[position C3T page 26](#)
- 6428.....[position C4T page 26](#)

### VDA R – KLT

- 3215.....[position R1T page 26](#)
- 4315.....[position R2T page 27](#)
- 4329.....[position R3T page 27](#)
- 6429.....[position R4T page 27](#)
- 6415.....[position R5T page 27](#)

### VDA RL – KLT

- 4280.....[position RL1T page 27](#)
- 4147.....[position RL2T page 28](#)
- 6280.....[position RL3T page 28](#)
- 6147.....[position RL4T page 28](#)

### RAKO

- 3-02.....[position RA1T page 28](#)

### PALLET COVERS

- 1208.....[position PC1T page 28](#)
- 9801.....[position PC2T page 29](#)
- HALF.....[position PC3T page 29](#)

### SKELETON BOXES

- KLAPA.....[position SB1T page 30](#)
- GITTERBOX...[position SB2T page 30](#)

### VDA PLASTIC PALLETS

- STANDARD.....[position PP1T page 29](#)
- HALF.....[position PP2T page 29](#)

### WOODEN PALLETS

- EUROPALLET.....[pos..WP1T page 29](#)



### VDA C-KLT 4314

**SAP Nr. 91.108.672 Plant 5304**

External dimensions L 400 x W 300 x H 147 mm  
 Internal dimensions L 334 x W 247 x H 103 mm  
 Tara weight 1,6 kg  
 Max load: 15 kg  
 Stackability factor 1+4 C1T



### VDA C-KLT 4328

**SAP Nr. 91.000.483 Plant 5304**

External dimensions L 400 x W 300 x H 280 mm  
 Internal dimensions L 334 x W 247 x H 236 mm  
 Tara weight 2,6 kg  
 Max load: 15 kg  
 Stackability factor 1+2 C2T



### VDA C-KLT 6414

**SAP Nr. 91.125.582 Plant 5304**

External dimensions L 600 x W 400 x H 147 mm  
 Internal dimensions L 532 x W 346 x H 98 mm  
 Tara weight 2,8 kg  
 Max load: 15 kg  
 Stackability factor 1+4 C3T



### VDA C-KLT 6428

**SAP Nr. 91.000.009 Plant 5304**

External dimensions L 600 x W 400 x H 280 mm  
 Internal dimensions L 532 x W 346 x H 231 mm  
 Tara weight 4,4 kg  
 Max load: 15 kg  
 Stackability factor 1+2 C4T



### VDA R-KLT 3215 **BLUE / DARK BLUE**

**SAP Nr. 91.140.468 Plant 5304**

External dimensions L 300 x W 200 x H 147 mm  
 Internal dimensions L 243 x W 162 x H 129 mm  
 Tara weight 0,6 kg  
 Max load: 15 kg  
 Stackability factor 1+4 R1T



### VDA R-KLT 4315

SAP Nr. 91.058.642 Plant 5304

External dimensions L 400 x W 300 x H 147 mm  
 Internal dimensions L 346 x W 265 x H 109 mm  
 Tara weight 1,3 kg  
 Max load: 15 kg  
 Stackability factor 1+4 R2T



### VDA R-KLT 4329

SAP Nr. 91.141.994 Plant 5304

External dimensions L 400 x W 300 x H 280 mm  
 Internal dimensions L 346 x W 265 x H 242 mm  
 Tara weight 1,9 kg  
 Max load: 15 kg  
 Stackability factor 1+2 R3T



### VDA R-KLT 6429 **VIOLET**

SAP Nr. 91.054.359 Plant 5304

External dimensions L 600 x W 400 x H 280 mm  
 Internal dimensions L 544 x W 364 x H 242 mm  
 Tara weight 3 kg  
 Max load: 15 kg  
 Stackability factor 1+2 R4T



### VDA R-KLT 6415

SAP Nr. 91.140.336 Plant 5304

External dimensions L 600 x W 400 x H 147 mm  
 Internal dimensions L 544 x W 364 x H 109 mm  
 Tara weight 2,2 kg  
 Max load: 15 kg  
 Stackability factor 1+4 R5T



### VDA RL-KLT 4280

SAP Nr. 91.056.063 Plant 5304

External dimensions L 400 x W 300 x H 280 mm  
 Internal dimensions L 345 x W 260 x H 262 mm  
 Tara weight 1,7 kg  
 Max load: 15 kg  
 Stackability factor 1+2 RL1T



### VDA RL-KLT 4147

SAP Nr. 91.056.034 Plant 5304

External dimensions L 400 x W 300 x H 147 mm  
 Internal dimensions L 345 x W 260 x H 129 mm  
 Tara weight 1,1 kg  
 Max load: 15 kg  
 Stackability factor 1+4 RL2T



### VDA RL-KLT 6280 GREY

SAP Nr. 91.052.300 Plant 5304

External dimensions L 600 x W 400 x H 280 mm  
 Internal dimensions L 544 x W 359 x H 262 mm  
 Tara weight 2,7 kg  
 Max load: 15 kg  
 Stackability factor 1+2 RL3T



### VDA RL-KLT 6147

SAP Nr. 91.056.785 Plant 5304

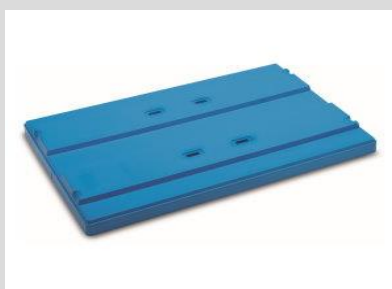
External dimensions L 600 x W 400 x H 147 mm  
 Internal dimensions L 544 x W 359 x H 129 mm  
 Tara weight 1,8 kg  
 Max load: 15 kg  
 Stackability factor 1+4 RL4T



### RAKO 3-302

SAP Nr. 91.185.576 Plant 5304

External dimensions L 600 x W 400 x H 325 mm  
 Internal dimensions L 558 x W 358 x H 320 mm  
 Tara weight 2,7 kg  
 Max load: 15 kg  
 Stackability factor 1+2 RA1T



### VDA – COVER PLATE P 1208

SAP Nr. 91.000.005 Plant 5304

External dimensions L 1204 x W 808 x H 80 mm  
 Tara weight 6,10 kg PC1T



## PLASTIC COVERAGE 9801

**SAP Nr. 91.189.404 Plant 5304**

External dimensions L 1204 x W 1006 x H 94 mm

Tara weight 8,2 kg

PC2T



## COVER FOR HALF PALLET

**SAP Nr. 91.145.606 Plant 5304**

External dimensions L 810 x W 610 x H 75 mm

Tara weight 2,0 kg

PC3T



## PLASTIC PALLET

**SAP Nr. 91.128.750 Plant 5304**

External dimensions L 1200 x W 800 x H 160 mm

Tara weight 16 kg

PP1T



## PLASTIC PALLET HALF

**SAP Nr. 91.186.579 Plant 5304**

External dimensions L 800 x W 600 x H 150 mm

Tara weight 8,4 kg

PP2T



## WOODEN EUROPALLET

**SAP Nr. 91.000.015 Plant 5304**

External dimensions L 1200 x W 800 x H 150 mm

Max.load dinamic 1500 kg

Tara weight 21 kg

WP1T



### **KLAPA 1200 x 800 x 950**

**SAP Nr. 91.196.569 Plant 5304**

External dimensions L 1200 x W 800 x H 950 mm

Internal dimensions L 1120 x W 720 x H 748 mm

Tara weight 45 kg

Max load: 500 kg

SB1T



### **GITTERBOX 1240 x 835 x 970**

**SAP Nr. 91.000.007 Plant 5304**

External dimensions L 1240 x W 835 x H 970 mm

Internal dimensions L 1220 x W 805 x H 790 mm

Tara weight 85 kg

Max load: 1000 kg

SB2T

# CATALOG FOR RETURNABLE PACKAGING

BOGE Elastmetall FRANCE S.A.S

Plant Fontenay 5336

## Transport containers and accessories

Returnable packaging	Returnable packaging	Returnable packaging
VDA SMALL CARGO CONTAINERS	COVERS / CONTAINERS	WOODEN AND PLASTIC PALLETS

**VDA C – KLT**

4328.....[position C1F page 32](#)

**VDA R – KLT**

4329.....[position R1F page 32](#)

6429.....[position R2F page 32](#)

**FOLDING BOXES**

4325.....[position FB1F page 32](#)

6423.....[position FB2F page 32](#)

**PALLET COVERS**

1208.....[position PC1F page 33](#)

**SKELETON BOXES**

GITTERBOX...[position SB1F page 33](#)

**PLASTIC PALLETS**

SLI 2112.....[position PP1F page 33](#)

**WOODEN PALLETS**

EUROPALLET.....[pos. WP1F page 33](#)



### VDA C-KLT 4328

SAP Nr. 91.000.148 Plant 5336

External dimensions L 400 x W 300 x H 280 mm  
 Internal dimensions L 334 x W 247 x H 236 mm  
 Tara weight 2,6 kg  
 Max load: 15 kg  
 Stackability factor 1+2

C1F



### VDA R-KLT 4329

SAP Nr. 91.058.643 Plant 5336

External dimensions L 400 x W 300 x H 280 mm  
 Internal dimensions L 346 x W 265 x H 242 mm  
 Tara weight 1,9 kg  
 Max load: 15 kg  
 Stackability factor 1+2

R1F



### VDA R-KLT 6429

SAP Nr. 91.058.644 Plant 5336

External dimensions L 600 x W 400 x H 280 mm  
 Internal dimensions L 544 x W 364 x H 242 mm  
 Tara weight 3 kg  
 Max load: 15 kg  
 Stackability factor 1+2

R2F



### FOLDING BOX 4325

SAP Nr. 91.155.388 Plant 5336

External dimensions L 400 x W 300 x H 214 mm  
 Internal dimensions L 356 x W 257 x H 206 mm  
 Tara weight 1,5 kg  
 Max load: 15 kg  
 Stackability factor 1+2

FB1F



### FOLDING BOX 6423

SAP Nr. 91.155.468 Plant 5336

External dimensions L 600 x W 400 x H 214 mm  
 Internal dimensions L 556 x W 356 x H 206 mm  
 Tara weight 2,4 kg  
 Max load: 15 kg  
 Stackability factor 1+2

FB2F





## VDA – COVER PLATE P 1208

SAP Nr. 91.000.005 Plant 5336

External dimensions L 1204 x W 808 x H 80 mm  
Tara weight 6,10 kg

PC1F



## WOODEN EUROPALLET

SAP Nr. 91.000.015 Plant 5336

External dimensions L 1200 x W 800 x H 150 mm  
Max.load dinamic 1500 kg  
Tara weight 21 kg

WP1F



## PLASTIC PALLET SLI 2112

SAP Nr. 91.136.415 Plant 5336

External dimensions L 1206 x W 1010 x H 193 mm  
Max.load dinamic 1500 kg  
Tara weight 19,6 kg

PP1F



## GITTERBOX 1240 x 835 x 970

SAP Nr. 91.000.007 Plant 5336

External dimensions L 1240 x W 835 x H 970 mm  
Internal dimensions L 1220 x W 805 x H 790 mm  
Tara weight 85 kg  
Max load: 1000 kg

SB1F

## KLT Details of the differences

### C-KLT VDA

with a completely ribbed base



This classic C-KLT is a universal container with an option for all realistic applications: The sides have a double-walled design with additional supporting struts for increased stability.



Stackable container

- Full, closed handles
- **Ribbed bottom**
- A container with a very heavy load
- **Maximum load 50 kg**
- **Rails** for handling arm



### R-KLT VDA

with a reduced ribbed base



The R-KLT represents the balance between the universal offer of the C-KLT and the Light-KLT with its properties reduced to a minimum.

Thus, compared to the Light-KLT, the supporting struts additionally provide the container with increased stability. The elements of the ribbed base, though reduced to the outer edge in comparison to the C-KLT, still fulfil the function of ribbed base stacking without limitations. Only the R-KLT with the base dimensions 300x200 mm has a smooth base.



- Stackable container
- Full, closed handles
- **Ribbed bottom**
- **Maximum load 20 kg**
- **Holes** for handling arm

### RL-KLT VDA

with a smooth base



The RL-KLT only differs from the R-KLT by the smooth base it has in common with the Light-KLT. Therefore, with low or medium weight loads, an RL-KLT may also be used instead of a R-KLT.



Stackable container

- Full, closed handles
- **Flat base with drainage holes**
- **Maximum load 20 kg**
- **Holes** for handling arm



## Light-KLT

with a smooth base and optional water discharge holes



This container was designed as a clear contrast to the universality of C-KLT. Instead of the double-wall, the Light-KLT has single sidewalls, the supporting struts of which add the respective stability. The completely ribbed base is replaced with a smooth, closed base.



Stackable container

- Full, closed handles
- Flat base with drainage holes
- Maximum load **20 kg**
- **Holes** for handling arm

## Foldable-KLT



The Foldable-KLT is a foldable container with the base dimensions 600x400 mm, which is available with a completely ribbed base like the C-KLT, as well as with a smooth base. With the ribbed base, mixed stacking of Foldable-KLT and other KLT's is possible. When being transported empty, the folded KLT enables space savings of 2/3 of its original Volume. Fully compatible with all KTL containers.



Stackable container

- Full, closed handles
- **Sturdy base ribbing**
- **Smooth sub-floor**
- Maximum load **20 kg**
- **Holes** for handling arm

## RAKO



The RAKO basic container is a universal container with design flexibility. It allows for a wide number of design variations ranging from base options to different types of handles and sides. RAKO containers are available in ESD material.

Base styles for low loads:

If a RAKO only has to take loads with a low weight, then a simple solid base is sufficient.

Base styles for high loads:

If containers are being used on an automatic conveyor system, the base deflection should be virtually zero. In this case the base of the container has to be reinforced. For this, an additional plastic plate is welded onto the ribbing of the pre-formed concave base of the RAKO.

This gives an enclosed double base, which can take a load of up to **70 kg**. A heavy-duty base can withstand the loading from a filled weight of up to **50 kg**.

Stackable container

- Solid base and walls with open handles
- **Suitable for long-term storage as and into production**
- Stable during transport, compatible with Euro pallets
- Color Grey